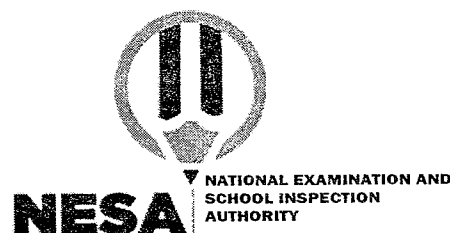


**CREATIVE PERFORMANCE AND
PHYSICAL EDUCATION: Content
Knowledge & Teaching Methods**

CPP 01

21/07/2021

8.30 AM - 11.30 AM



TTC NATIONAL EXAMINATIONS, 2020-2021

**SUBJECT: CREATIVE PERFORMANCE AND PHYSICAL EDUCATION: Content
Knowledge & Teaching Methods**

OPTIONS: SOCIAL AND RELIGIOUS STUDIES EDUCATION (SRSE)

DURATION: 3 HOURS

INSTRUCTIONS:

- 1) Write your names and index number on the answer booklet as written on your registration form, and **DO NOT write** your names and index number on additional answer sheets if provided.
- 2) Do not open this question paper until you are told to do so.
- 3) This paper comprises two sections: section **A** and section **B**

SECTION A: ATTEMPT ALL QUESTIONS.

(80 MARKS)

SECTION B: ATTEMPT ANY TWO QUESTIONS.

(20 MARKS)

- 4) Use a **blue** or **black** pen.
- 5) Drawing tools are **mandatory**

SECTION A: ATTEMPT ALL QUESTIONS. (80 marks)

1. Describe the major steps involved in craft production process. **(6 marks)**
2. a) What is a landscape? **(2 marks)**
b) You are going to produce a landscape painting or drawing. Identify things you need to consider when drawing or painting this landscape. **(5 marks)**
3. Observe the artwork below and then respond to the questions that follow.

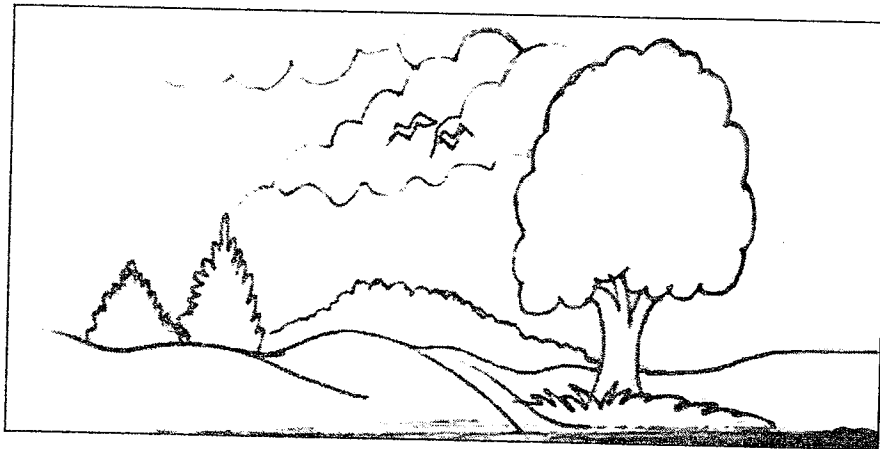


- a) Name the technique used to produce this artwork. **(1 mark)**
- b) Describe the processes taken to produce this artwork. **(4 marks)**
4. Match the following decorating techniques with the tools used for each. **(1.5 marks)**

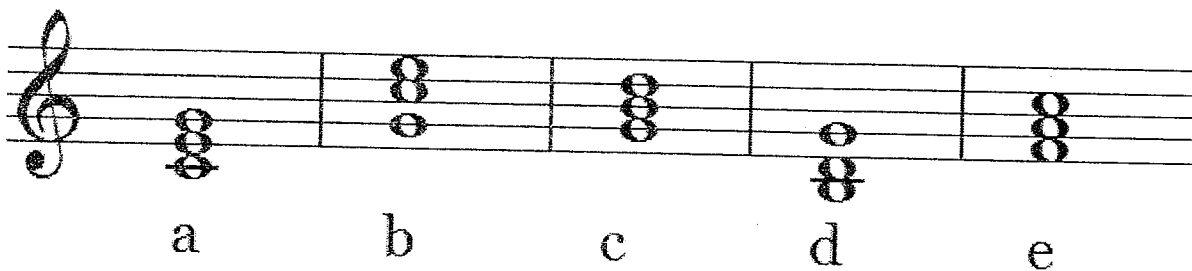
Decorating techniques	Tools used
Incising technique	Paint
Impression technique	Knife
Painting technique	Coin

5. Explain the techniques that you can use to create design from motif and pattern on surface. **(4.5 marks)**
6. Identify the steps involved in mixing dyes for tie - dye. **(4 marks)**

7. What is the difference between batik and tie-dye techniques? **(2 marks)**
8. Distinguish between twining weave and ghiordes knot. **(2 marks)**
9. Reproduce the rough drawing below and paint it with colors respecting the three parts of a landscape. **(3 marks)**



10. Explain how music syllabus can be used to achieve quality education in Rwanda. **(4 marks)**
11. With one example of each, give the difference between harmonic and melodic intervals. **(4 marks)**
12. How many types of triads in common use? Explain them. **(4 marks)**
13. Analyze the following triads: **(5 marks)**



14. Attribute the following words to either comedy or tragedy. **(2 marks)**
 - a) Sad
 - b) Fun
 - c) Anger
 - d) Cry
 - e) Smile

15. Betalt Brecht views drama in two ways. What are these views? **(4 marks)**
16. Define the following: **(5 marks)**
- a) Auditorium
 - b) Playwright
 - c) Prop
 - d) Pantomime
 - e) Comedy
17. Many types of drama are built on 2 major types. What are they? **(2 marks)**
18. In the process of teaching and learning of physical education and sports, some methodological principles should be respected. What are those principles? **(5 marks)**
19. Provide six (6) most common violations in basketball. **(3 marks)**
20. In playing basketball, when is the ball considered to as dead or live? **(2 marks)**
21. Discuss any five materials, tools and equipment that are used during the Drawing lesson in Upper primary class. **(5 marks)**

SECTION B: ATTEMPT ANY TWO QUESTIONS. (20 marks)

22. Explain the following musical terms: **(10 marks)**
- a) Time signature
 - b) Enharmonic notes
 - c) Timber
 - d) Tenuto
 - e) Solfeggio
 - f) Pitch
 - g) Arpeggio
 - h) Harmony
 - i) Tone
 - j) Tonic
23. Drama still has a word in education. Discuss. **(10 marks)**
24. Explain the main steps involved in composing a play. **(10 marks)**
25. a) Do you think that the use of technology in teaching Physical Education and Sports is needed? If yes/No, support your answer. **(5 marks)**
- a) Discuss the importance of making corrections while conducting a Physical Education and Sports (PES) lesson. **(5 marks)**