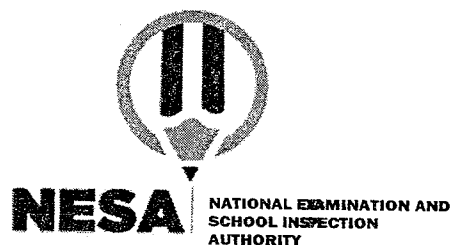


**CREATIVE PERFORMANCE AND
PHYSICAL EDUCATION: Content
Knowledge & Teaching Methods**

CPP 02

21/07/2021

8.30 AM - 11.30 AM



TTC NATIONAL EXAMINATIONS, 2020-2021

**SUBJECT: CREATIVE PERFORMANCE AND PHYSICAL EDUCATION:
Content Knowledge & Teaching Methods**

OPTIONS: EARLY CHILDHOOD AND LOWER PRIMARY EDUCATION (ECLPE)

DURATION: 3 HOURS

INSTRUCTIONS:

- 1) Write your names and index number on the answer booklet as written on your registration form, and **DO NOT write** your names and index number on additional answer sheets if provided.
- 2) Do not open this question paper until you are told to do so.
- 3) This paper comprises two sections: section **A** and section **B**

Section **A**: Attempt all questions.




(70 marks)

Section **B**: Attempt **any three** questions.

(30 marks)

- 4) Use a **blue** or **black** pen.
- 5) Drawing tools are **mandatory**

SECTION A: ATTEMPT ALL QUESTIONS. (70 marks)

1. Differentiate warm colors from cool colors and give 2 examples for each category. **(3 marks)**
2. There are three main kinds of colours. What are they? **(6 marks)**
3. On a picture of a man, the head is bigger than other parts of the body. What principle of art and design is not respected? **(4 marks)**
4. Define the following terms: **(4 marks)**
 - a) Mosaic
 - b) Tesserae
5. Incision is one of the different techniques used to decorate clay objects. Describe its (incision) process. **(4 marks)**
6. Discuss the following terms: **(4 marks)**
 - a) Motif
 - b) Pattern
7. Answer **True (T)** or **False (F)** the following statements: **(4 marks)**
 - a) An organic shape is from organic objects like triangles
 - b) A texture is a roughness or darkness of a surface
 - c) The secondary source of colour is pigment
 - d) Blue and orange are complementary colours
8. Combine the following to make one note: **(6 marks)**
 - a)  = ?
 - b)  = ?
 - c)  = ?
9. Below are musical instruments, group them in their families. **(6 marks)**

a. Iningiri	e. A wistle
b. Umuduri	f. Inanga
c. Ishakwe	g. Umwirongi
d. Amayugi	h. Violin
10. To each major scale below associate its relative minor scale. **(1 mark)**
 - a) A Major scale
 - b) B flat major scale.
11. Explain any three (3) types of dramatic action. **(6 marks)**
12. Describe how you can take care of tools that are used in creative activities. **(4 marks)**
13. Explain the importance of Rwandan traditional drama in sustaining social cultural activities. **(5 marks)**

14. Explain the most common causes of sports injuries and their symptoms/signs. **(5 marks)**
15. Discuss the purpose of doing Physical Education and Sports. **(3 marks)**
16. Discuss the qualities of a song to be taught in primary school. **(3 marks)**
17. What is the rationale behind the teaching of Fine Art and Crafts in Primary School? **(2 marks)**

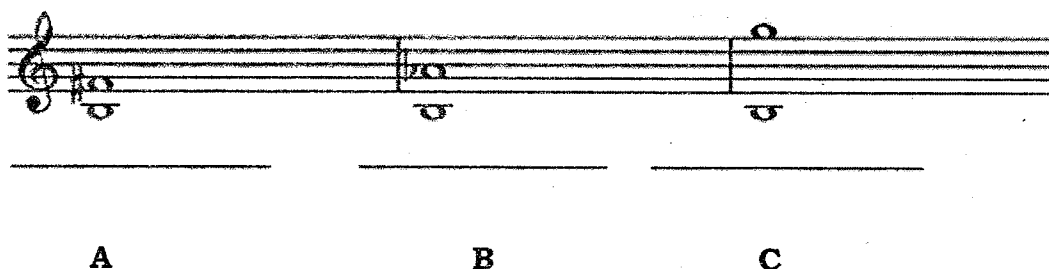
SECTION B: ATTEMPT ANY THREE QUESTIONS. (30 marks)

18. Discuss the five functions of sculpture. **(10 marks)**
19. The following terms are used in sculpture. They are split into materials and tools for an appropriate technique. Using the list, fill the table below. **(10 marks)**

List of terms: Moulds, knives, Papier maché, Soft stone, a file, Clay, Sieve, plaster of Paris

Techniques	Materials	Tools
1. Modeling		
2. Carving		
3. Casting		

20. A) Fill in the blank space: **(1 mark)**
A sign that we place after a note to increase its value by half is called
B) Describe each of these harmonic intervals. **(9 marks)**



21. A) Fill in the blank space: **(1 mark)**
A collection of five lines and four spaces is called:

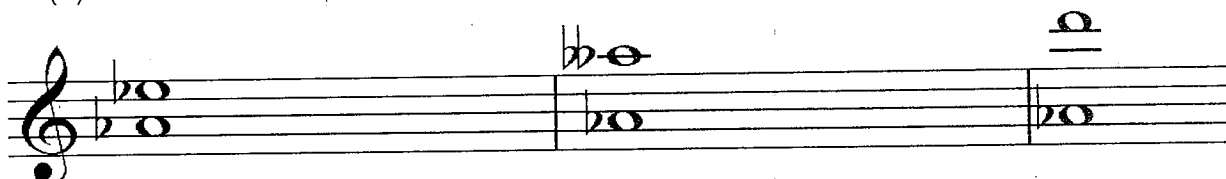
B) Describe each of these harmonic intervals,

(9 marks)

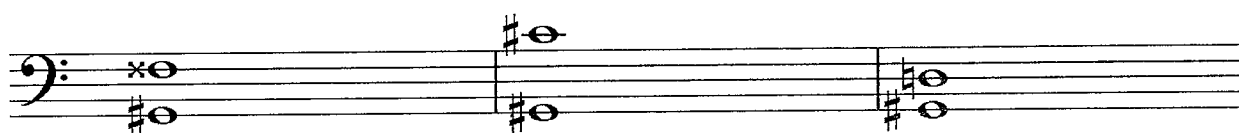
(i)



(ii)



(iii)



22. Discuss:

a) The origin of drama.

(3 marks)

b) Ubukwe bwa kinyarwanda bw'ubu: ibice n'ibintu biburanga.

(7 marks)

23. Explain the following PES expressions:

(10 marks)

- (1) Offside
- (2) Technique
- (3) Endurance:
- (4) Sport science:
- (5) Coaching
- (6) Body language
- (7) Gymnastics
- (8) Zone defense form
- (9) Rotation
- (10) Violation

24. By using drawing tools, draw the following court areas and mention their dimensions:

(10 marks)

- a) Football court
- b) Athletics track
- c) Volleyball court
- d) Basketball court
- e) Javelin throw area