

## CREATIVE PERFORMANCE

### CPE 01

27/07/2022

8:30 AM – 11:30 AM



## TTC NATIONAL EXAMINATIONS, 2021-2022

### SUBJECT: CREATIVE PERFORMANCE

#### OPTIONS:

- EARLY CHILDHOOD AND LOWER PRIMARY EDUCATION (**ECLPE**)
- LANGUAGES EDUCATION (**LE**)
- SOCIAL STUDIES EDUCATION (**SSE**)

#### DURATION: 3 HOURS

#### INSTRUCTIONS:

- 1) Write your names and index number on the answer booklet as written on your registration form, and **DO NOT** write your names and index number on additional answer sheets if provided.
- 2) Do not open this question paper until you are told to do so.
- 3) This paper consists of **two** parts:

**Part I: Music** : Attempt **all** questions. **(50 marks)**

**Part II: Fine Arts and Crafts**: Attempt **all** questions. **(50 marks)**

- 4) Use a **blue** or **black** pen.
- 5) Drawing tools are **mandatory**.

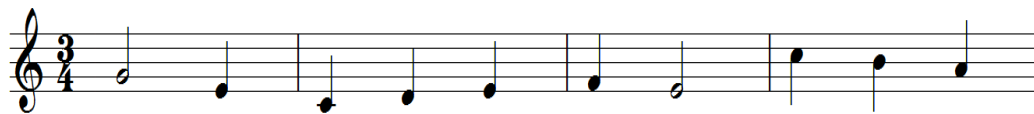
## PART I: MUSIC

**Attempt all questions (50 marks)**

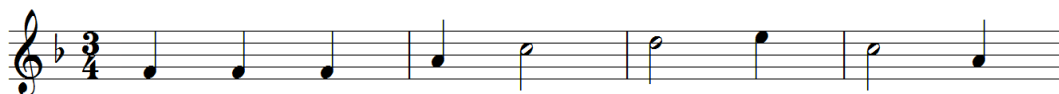
- 1) Define the following terms: **(4 marks)**
  - a) Music
  - b) Dance
  - c) Rhythm
  - d) Pitch
- 2) Consider the staves below: **(5 marks)**



- a) Put treble clef
  - b) How many beats are allocated between two bars?
  - c) Considering a crotchet as a unit value, what time signature may you suggest?
- 3) What is the key signature for those two melodies? **(4 marks)**
- a)



- b)



- 4) Underneath each bar of music, write in the counts. Then write the letter names above each note: **(4 marks)**





## **PART II: FINE ARTS AND CRAFTS**

### **Attempt all questions (50 marks)**

- 11) What is the nationality of the following artists? **(3 marks)**
- a) Claude Monet:
  - b) Edgar Degas:
  - c) Jules Cheret:
- 12) Mention three basic elements of Graphic art. **(3 marks)**
- 13) Name any three techniques you can use to decorate clay objects. **(3 marks)**
- 14) a) Explain primer as an artistic term. **(2 marks)**
- b) What is the role of primer? **(1 mark)**
- 15) Explain the main properties of clay. **(3 marks)**
- 16) Use a pencil to draw any fruits which are in a white bowl. **(5 marks)**
- 17) Design a pattern that can be put on a bedcover. **(10 marks)**
- 18) a) What is cursive? **(2 marks)**
- b) Explain cursive lettering. **(3 marks)**
- 19) Design a motif from leaf picked from the surroundings. **(5 marks)**
- 20) Choosing LOVE as theme, with illustration and three-dimension letters, create your own word in any style that is creatively, original and attractive. **(10 marks)**

**- END -**